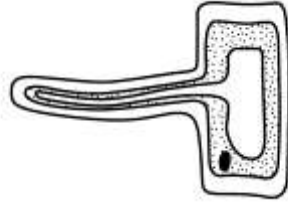


Different cells, different jobs

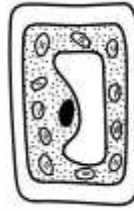
These diagrams show some specialised cells.



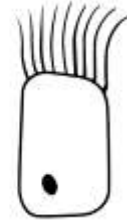
A



B



C



D

Note: this muscle cell (A) should be more pointed at the ends

1 Select words from this list to identify cells A, B, C and D.

- | | |
|---------------------|-----------|
| ciliated epithelial | nucleus |
| cytoplasm | palisade |
| muscle | root hair |
| nerve | xylem |

A: _____ B: _____

C: _____ D: _____

2 Which of the cells in the diagrams are plant cells?

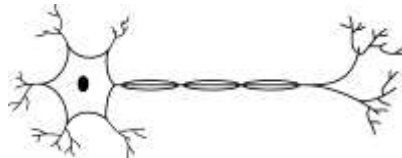
_____ and _____

3 What does the word 'specialised' mean?

4 Explain how the shape of the root hair cell is specialised to help it absorb water and minerals from the soil.

5 Here is a picture of a cell.

a Is it a plant or an animal cell?
How can you tell?



b How is it specialised to do its job?

