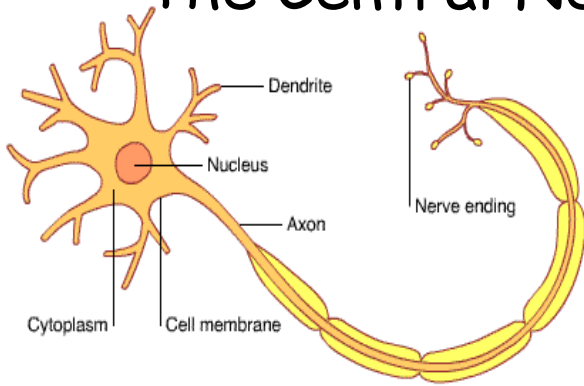


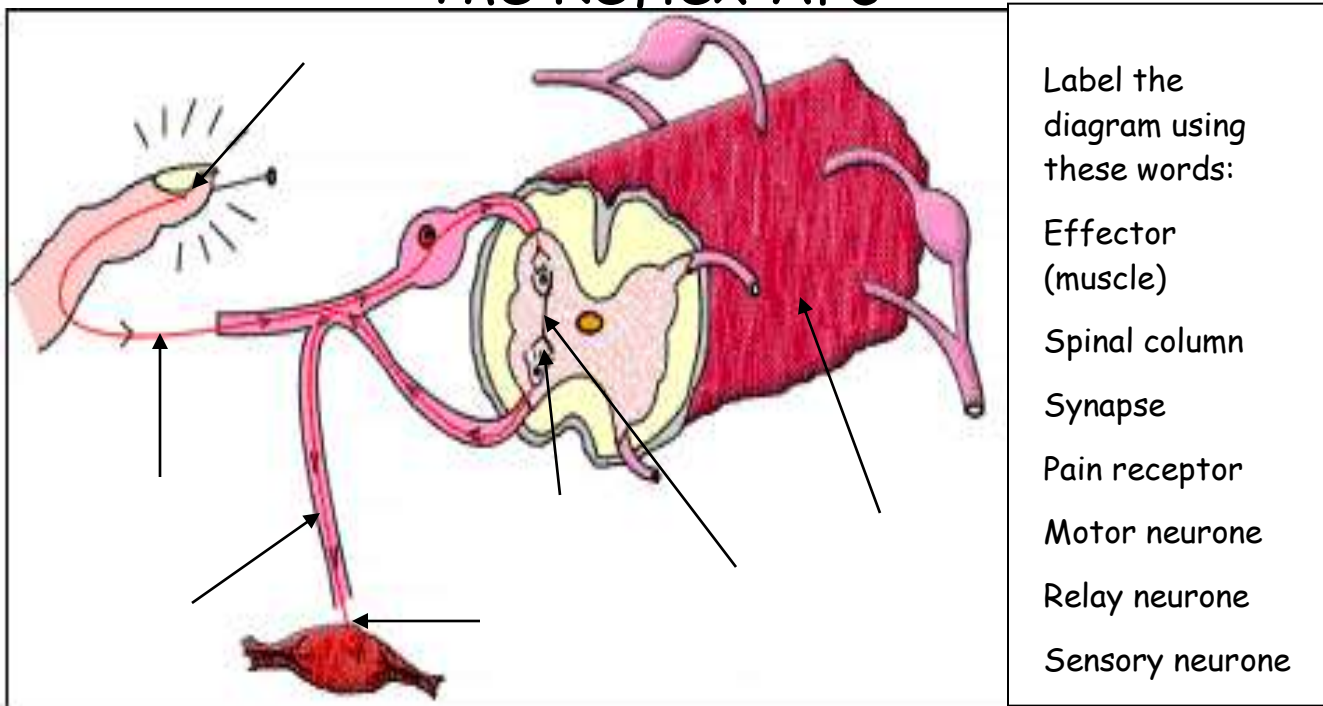
The Central Nervous System (CNS)



Nerves are made up of bunches of these very long nerve cells.

This is a motor neurone. It carries impulses from the CNS to a muscle or gland (where there is an effect).

The Reflex Arc



- Label the diagram using these words:
- Effector (muscle)
 - Spinal column
 - Synapse
 - Pain receptor
 - Motor neurone
 - Relay neurone
 - Sensory neurone

The nerves involved in form a reflex arc. This is made up of different types of neurone each one separated by a tiny gap called a In the diagram above the is a pin-prick. It is detected by a receptor in the skin. This causes to pass along the sensory neurones to the In the CNS, impulses are passes from sensory neurones to via neurones. Motor neurones then transmit impulses to an which carries out a response. In this case a contracts and the finger is pulled away.

Fill in the gaps in the paragraph using these words:

- muscle impulses CNS effector reflex action synapse
- Motor neurone pain relay stimulus

