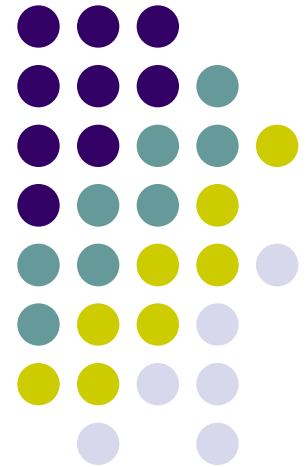
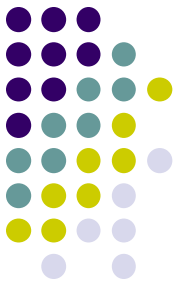


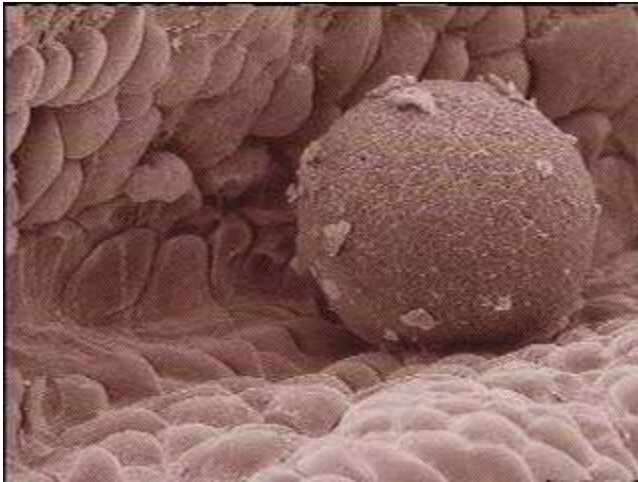
Human Reproduction





Where We Begin

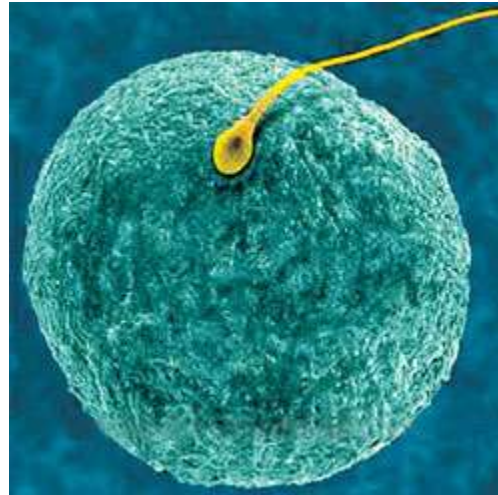
- Formation of the egg and sperm

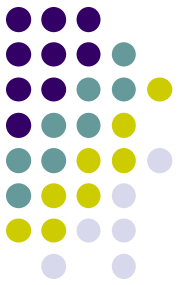


Fertilisation



- The joining of the gametes (sex cells)
 - Sperm
 - Egg





Fertilisation

- Depending on the animal, this can occur either inside or outside the female body



Fertilisation



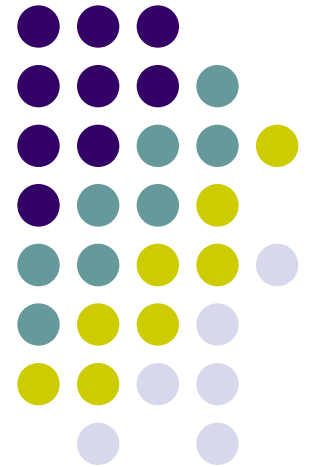
- Internal
 - Male ejaculates sperm into a female
 - Mammals, reptiles, birds

Fertilisation

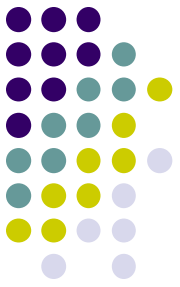


- External
 - Male releases sperm on to eggs outside the female body
 - Fish, frogs

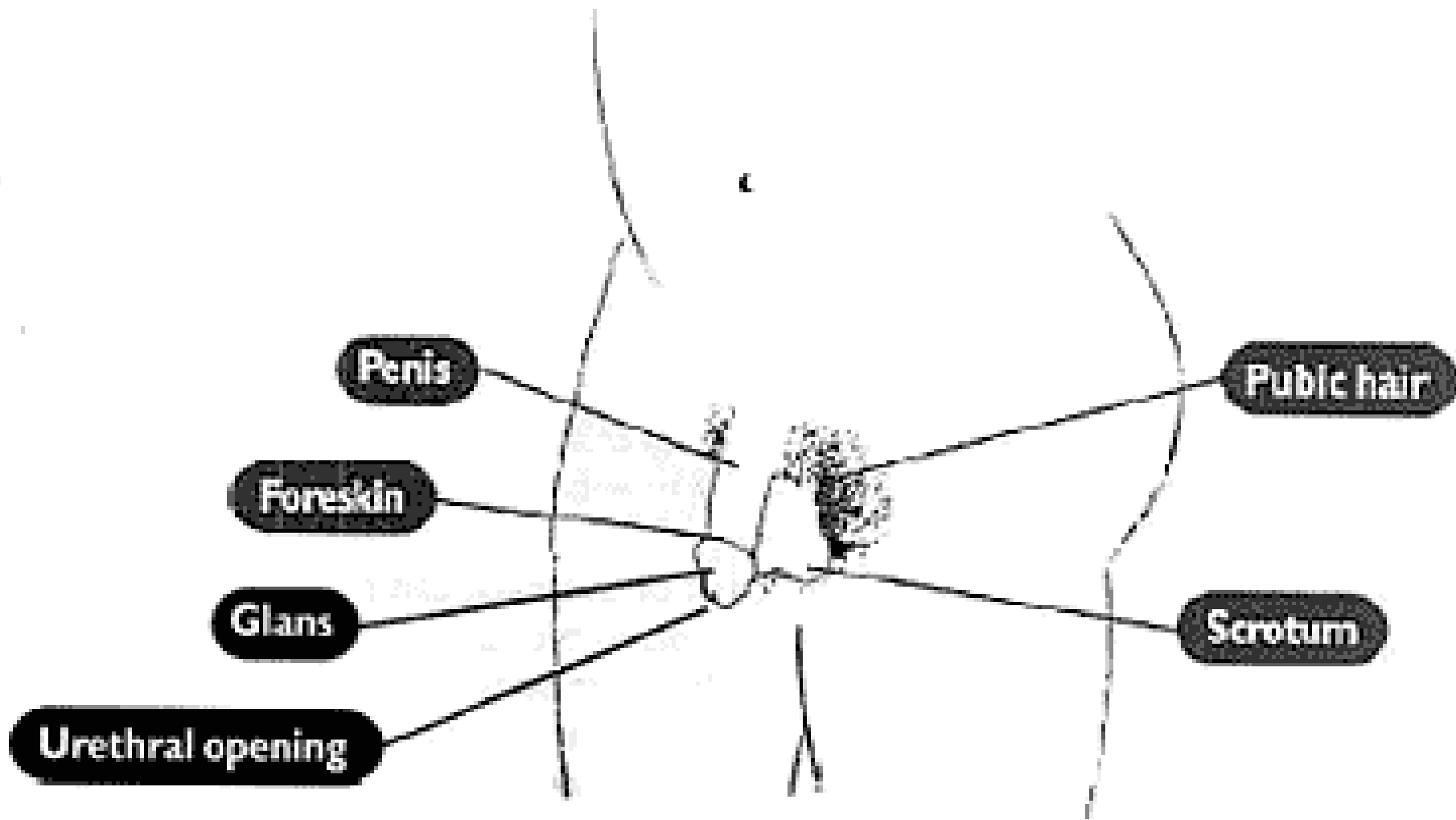
The Sex Organs

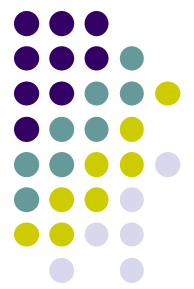


Male sex organs



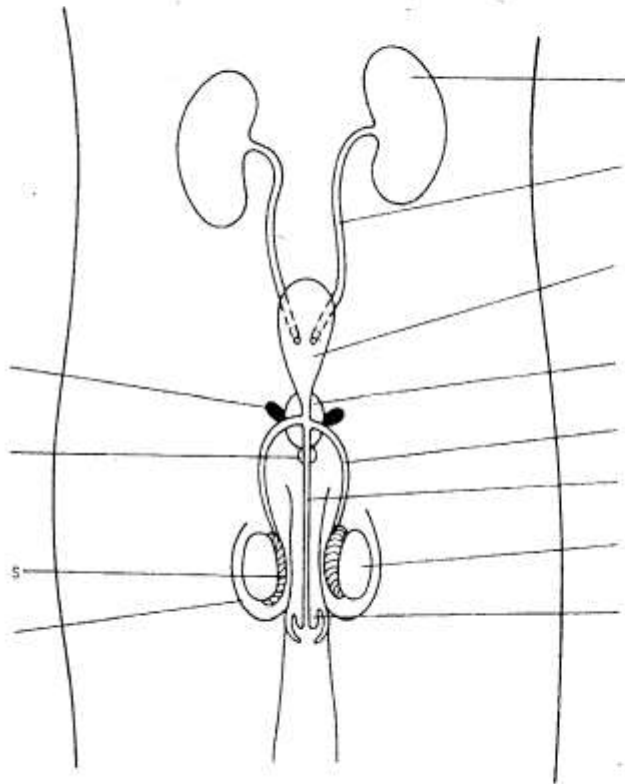
How things look outside





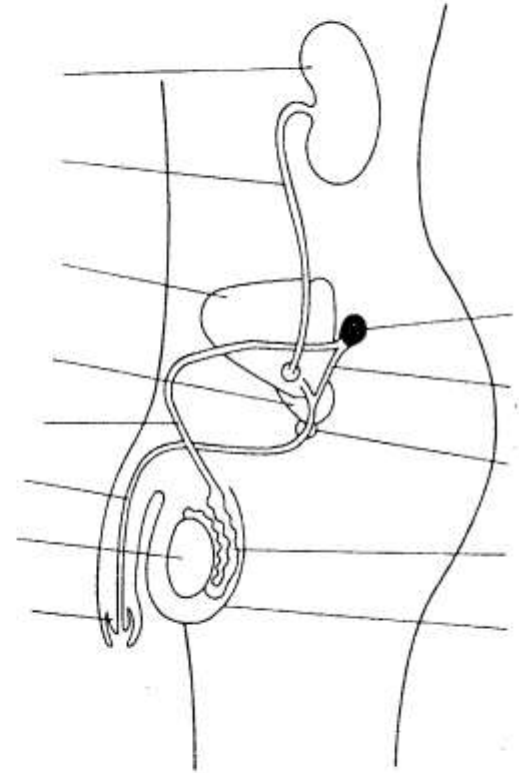
**THE BRAIN
IS THE
LARGEST
SEX
ORGAN
OF ALL!!**

Human male reproductive system



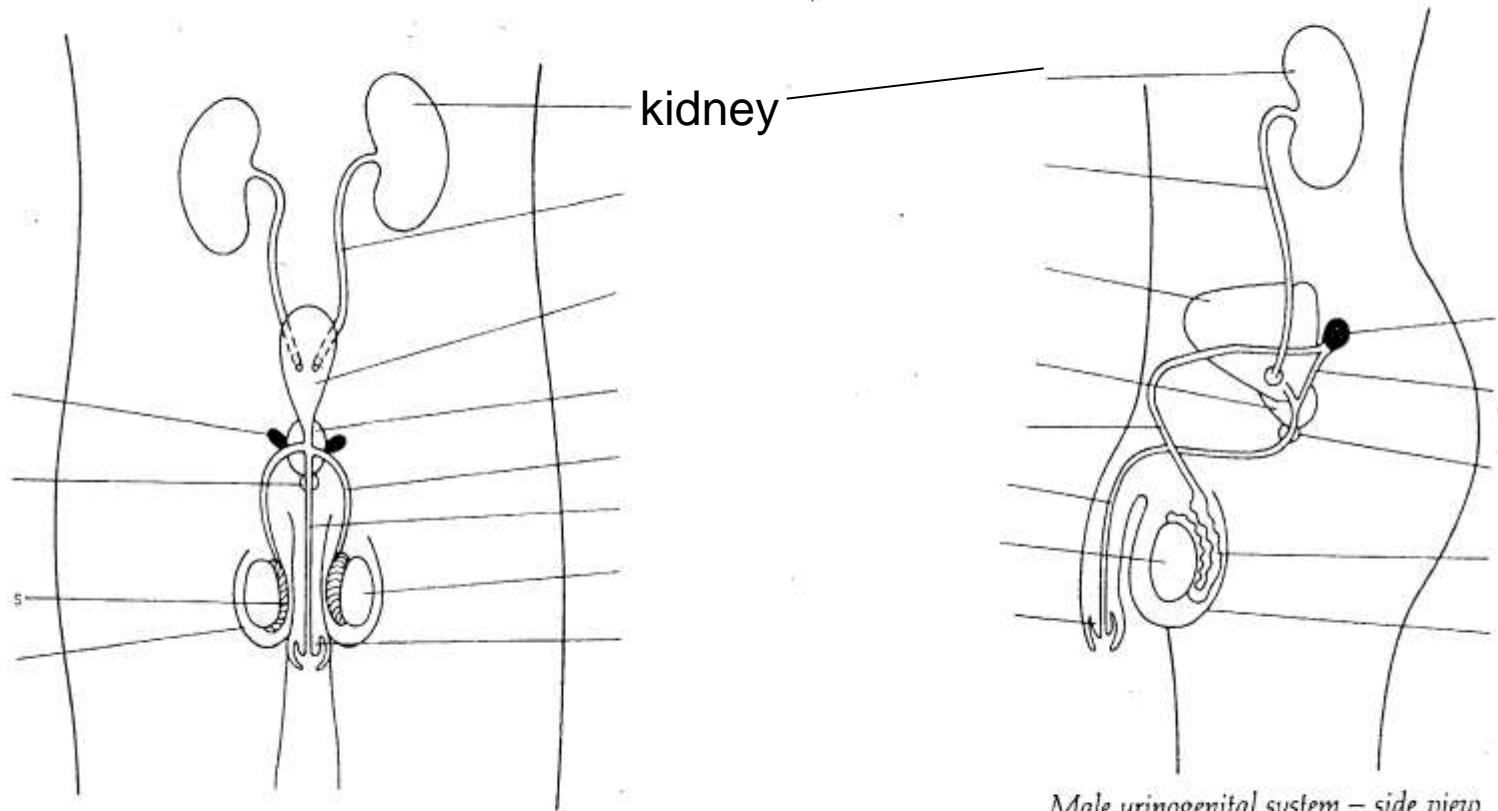
3. 19.3(a) Male urinogenital system (simplified) – front view

Artery



Male urinogenital system – side view

Human male reproductive system

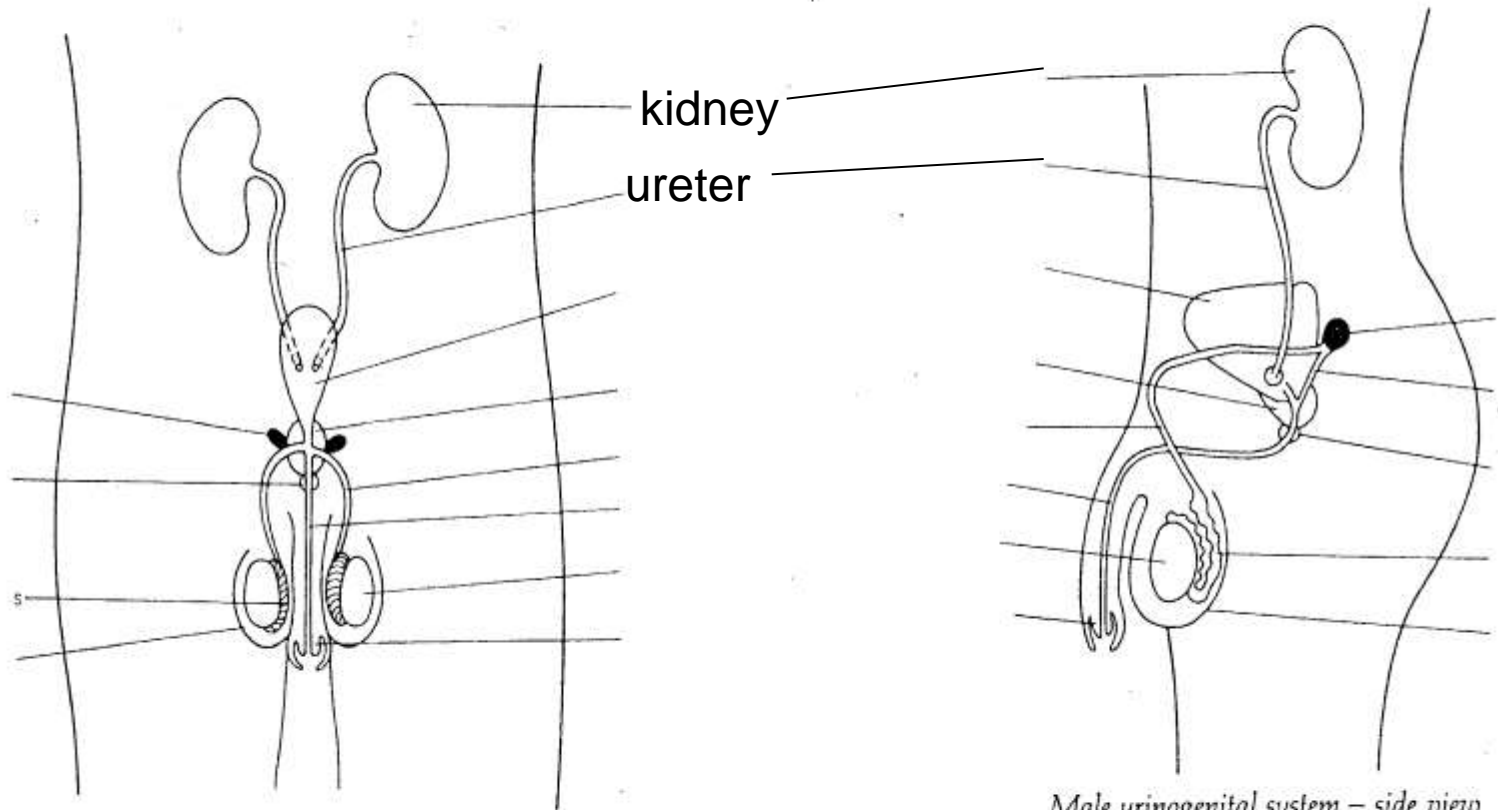


3. 19.3(a) Male urinogenital system (simplified) – front view

Artery

Male urinogenital system – side view

Human male reproductive system

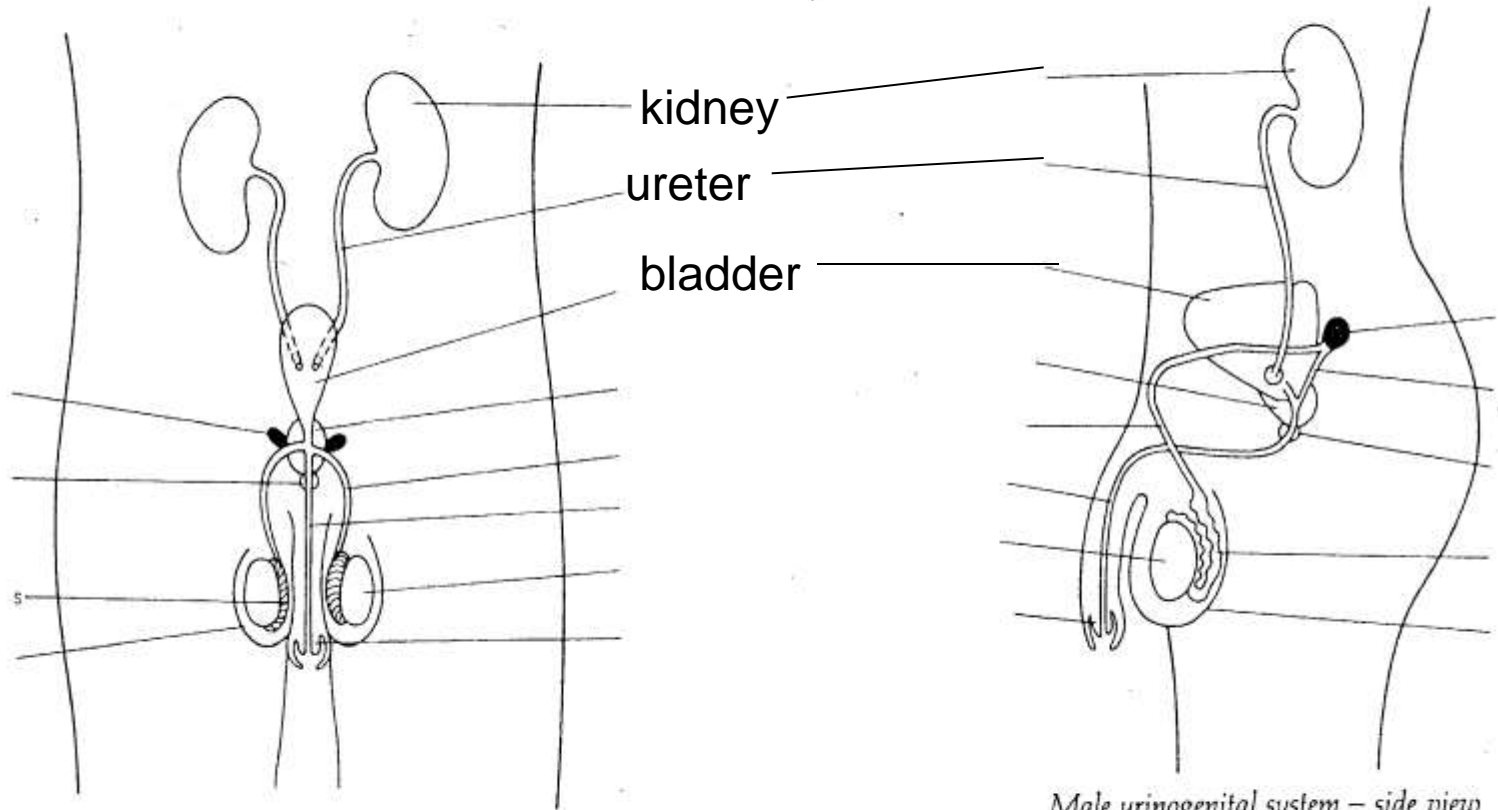


3. 19.3(a) Male urinogenital system (simplified) – front view

Artery

Male urinogenital system – side view

Human male reproductive system

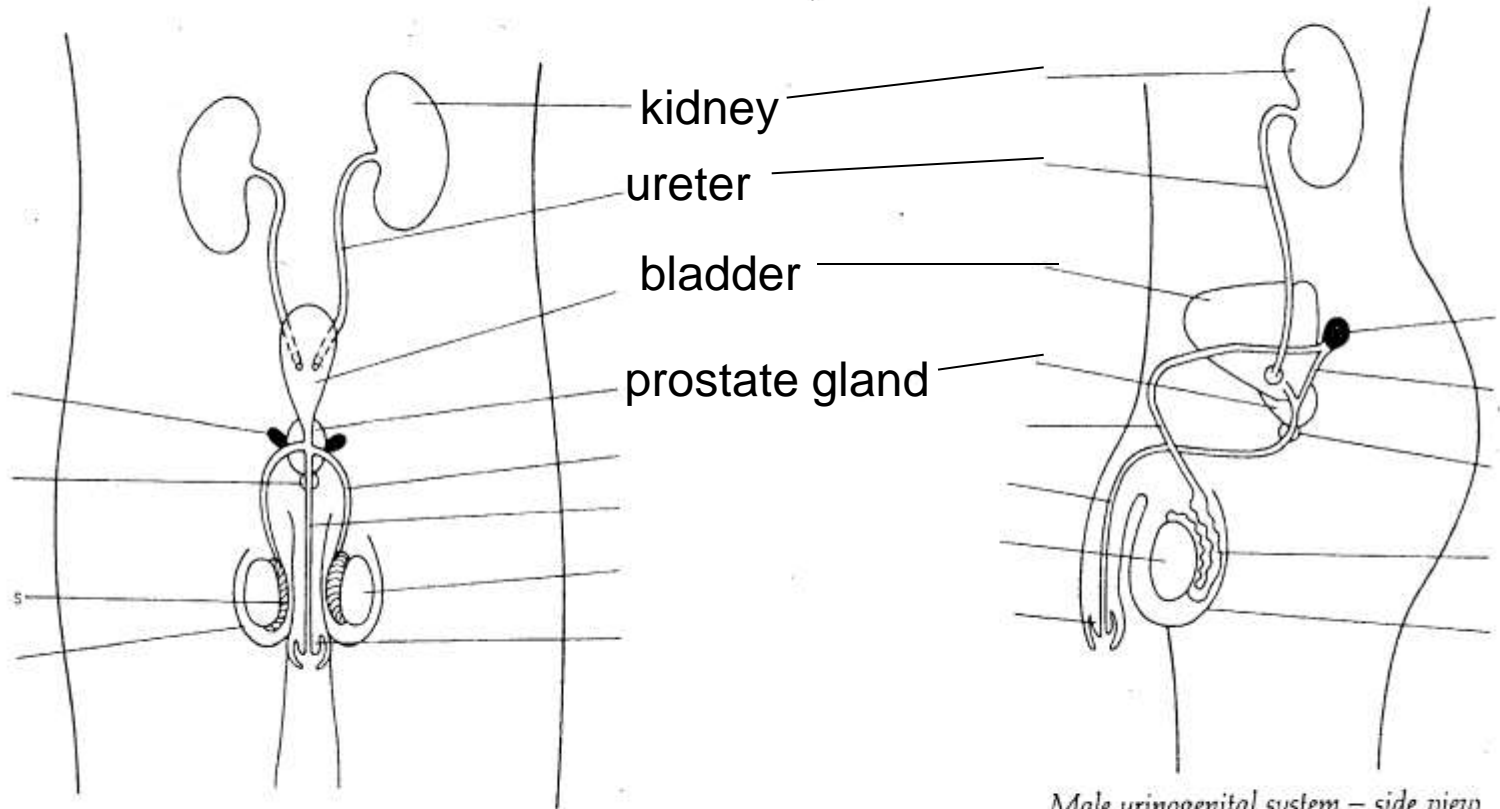


3. 19.3(a) Male urinogenital system (simplified) – front view

Artery

Male urinogenital system – side view

Human male reproductive system

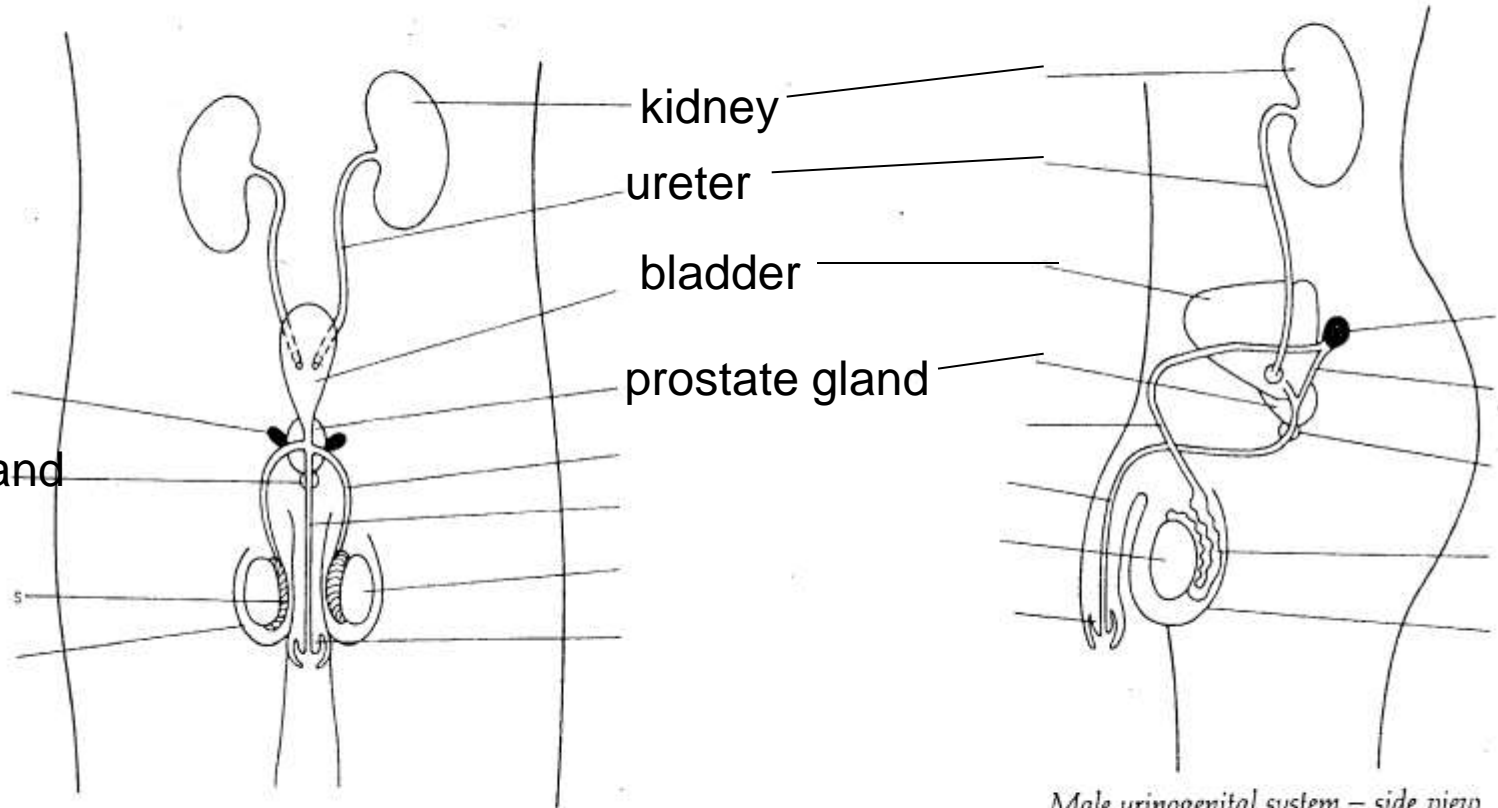


3. 19.3(a) Male urinogenital system (simplified) – front view

Artery

Male urinogenital system – side view

Human male reproductive system

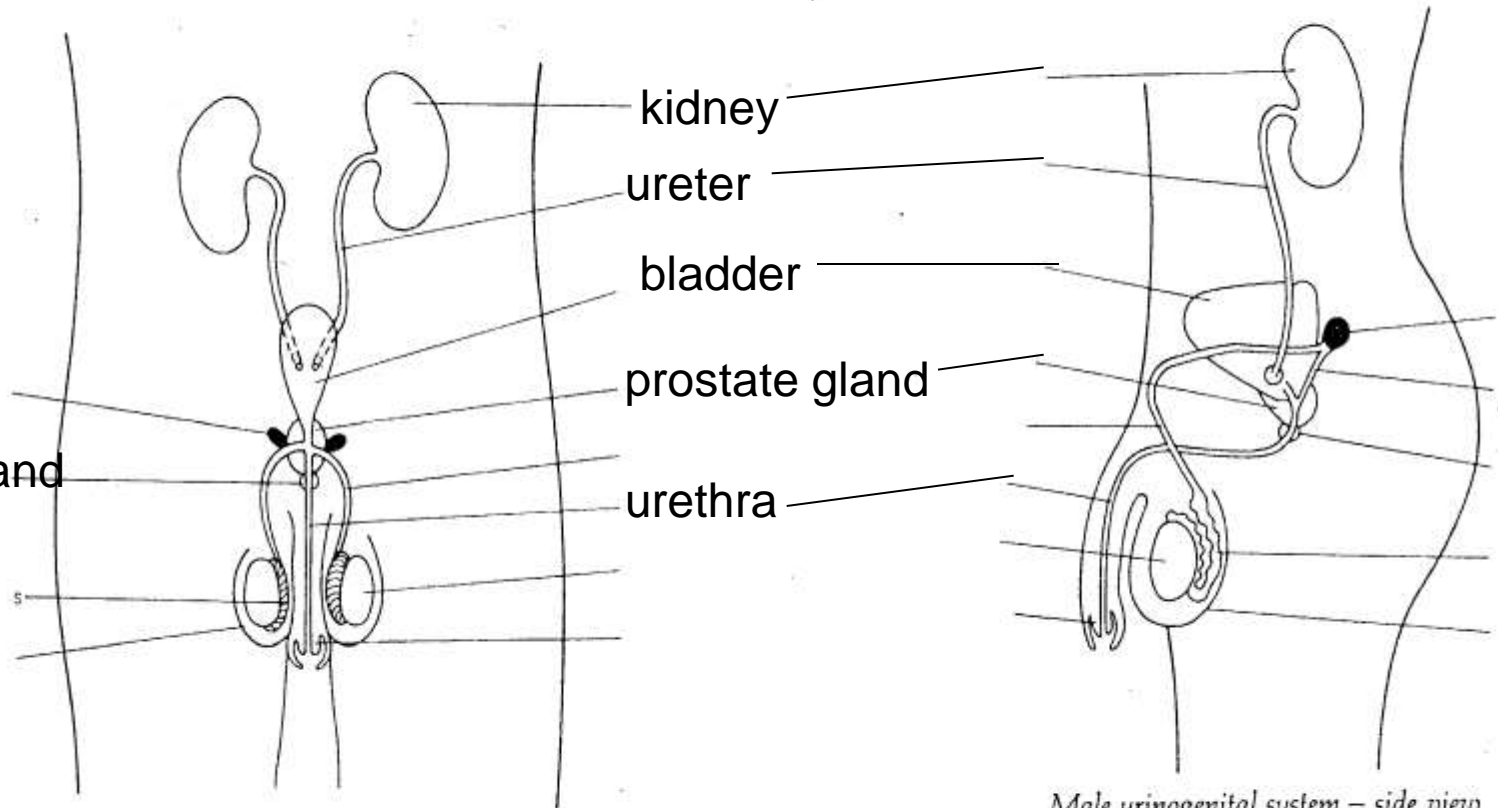


3. 19.3(a) Male urinogenital system (simplified) – front view

Male urinogenital system – side view

Artery

Human male reproductive system



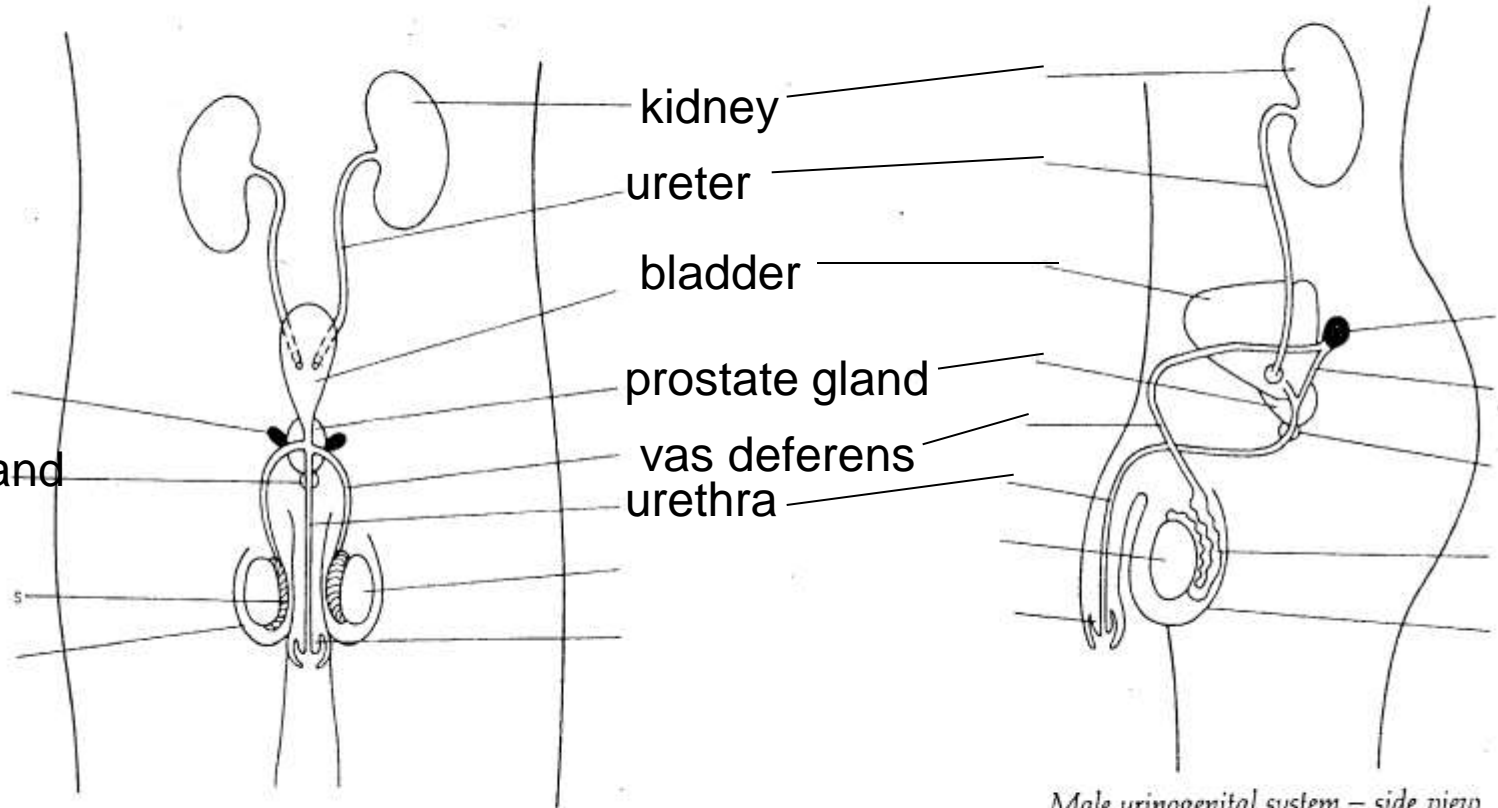
Cowper's gland

Fig. 19.3(a) Male urinogenital system (simplified) – front view

Male urinogenital system – side view

Artery

Human male reproductive system



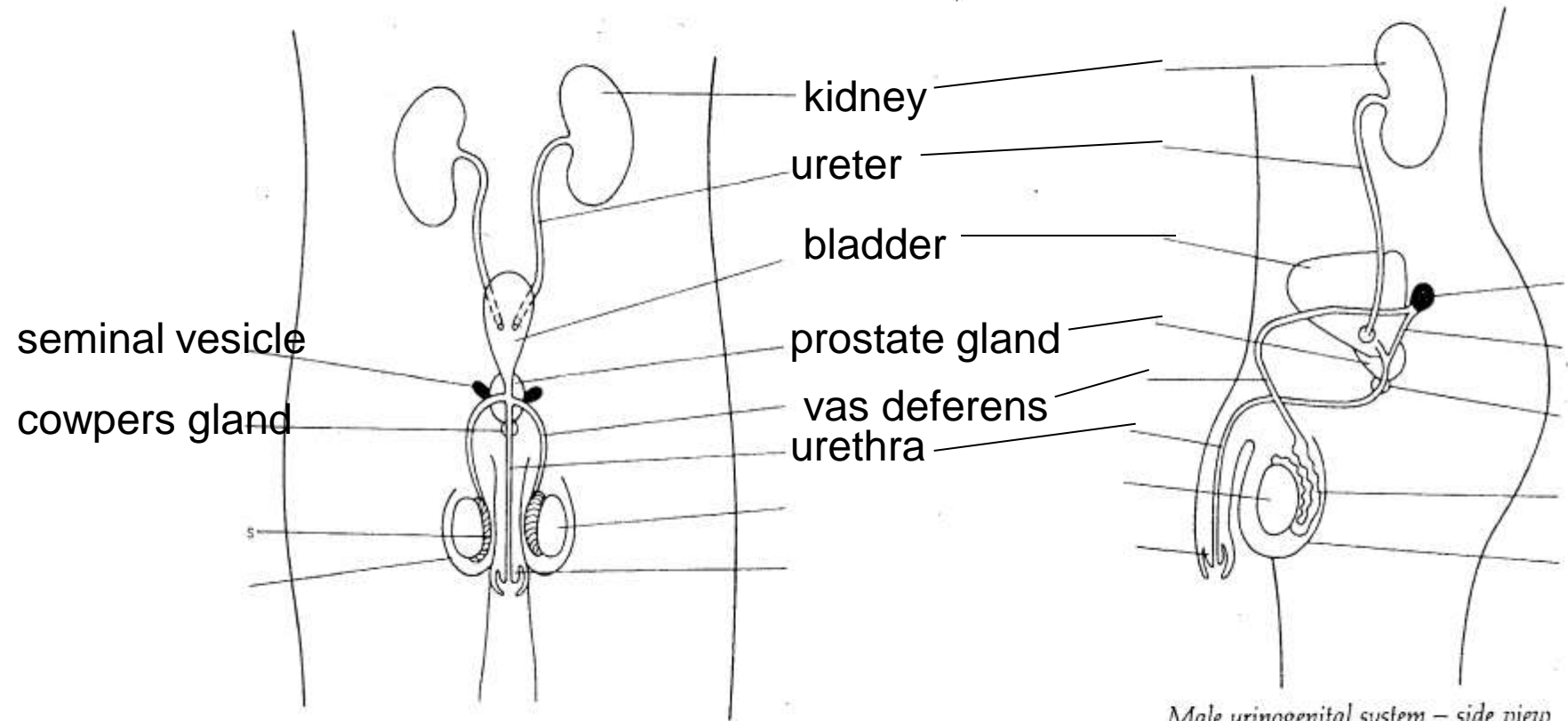
Cowper's gland

Fig. 19.3(a) Male urinogenital system (simplified) – front view

Male urinogenital system – side view

Artery

Human male reproductive system

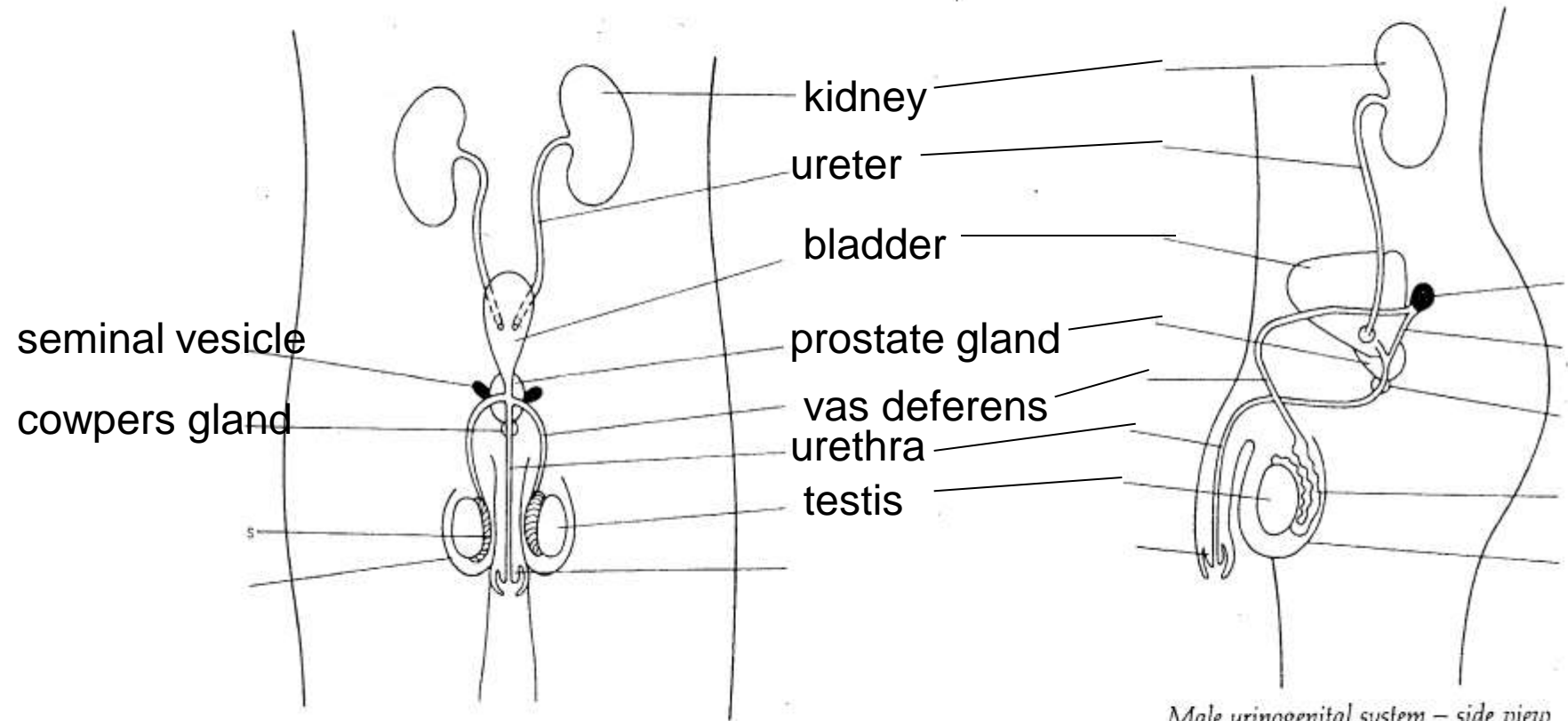


3. 19.3(a) Male urinogenital system (simplified) – front view

Male urinogenital system – side view

Artery

Human male reproductive system

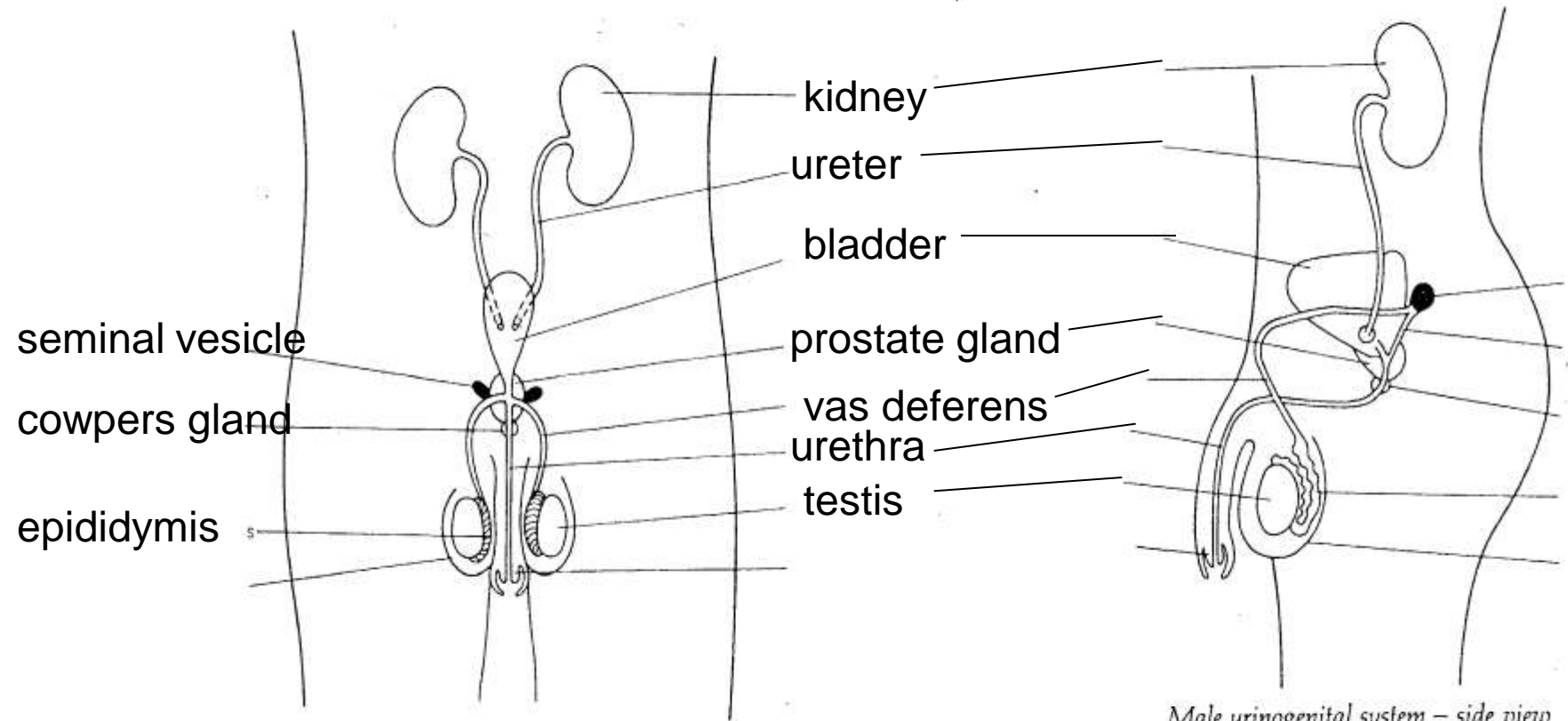


3. 19.3(a) Male urinogenital system (simplified) – front view

Male urinogenital system – side view

Artery

Human male reproductive system

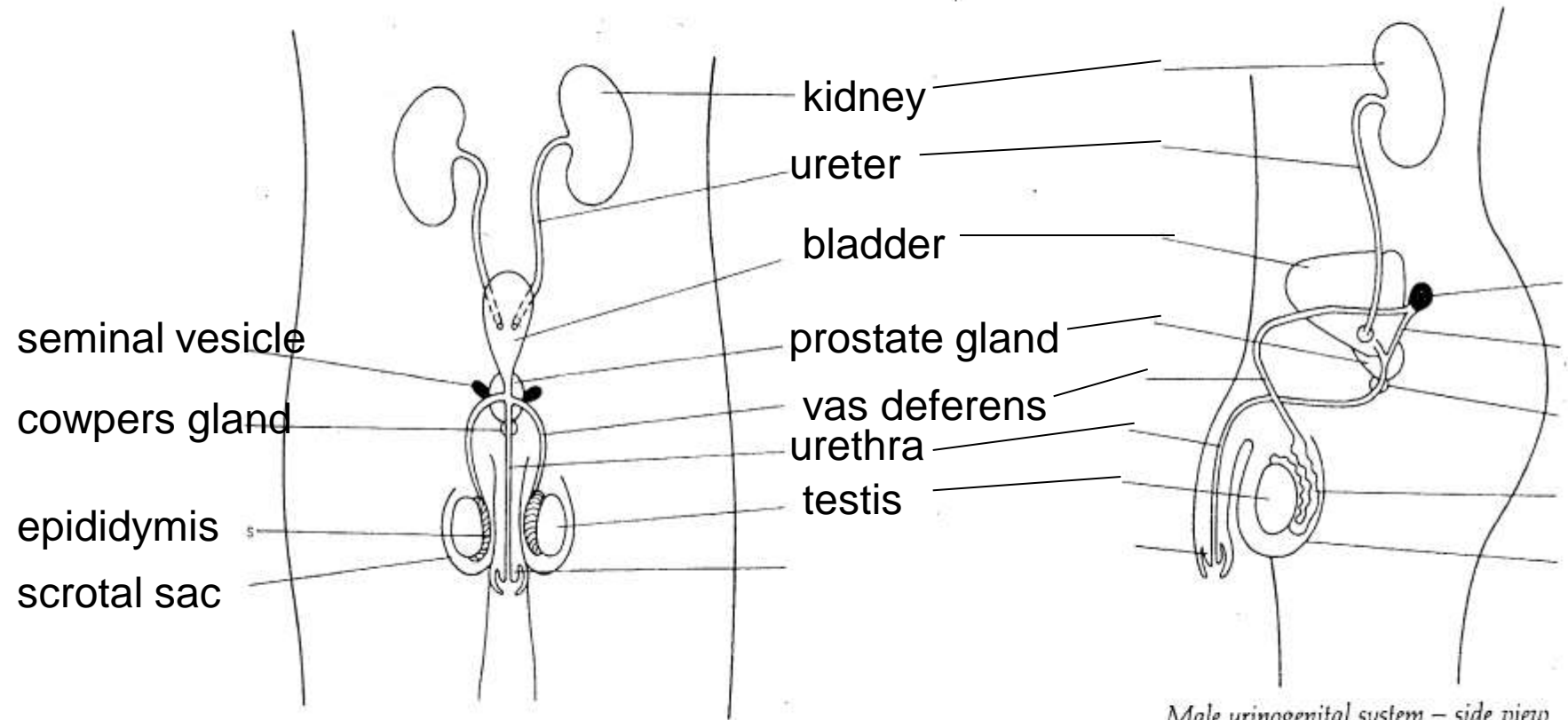


3. 19.3(a) Male urinogenital system (simplified) – front view

Male urinogenital system – side view

Artery

Human male reproductive system

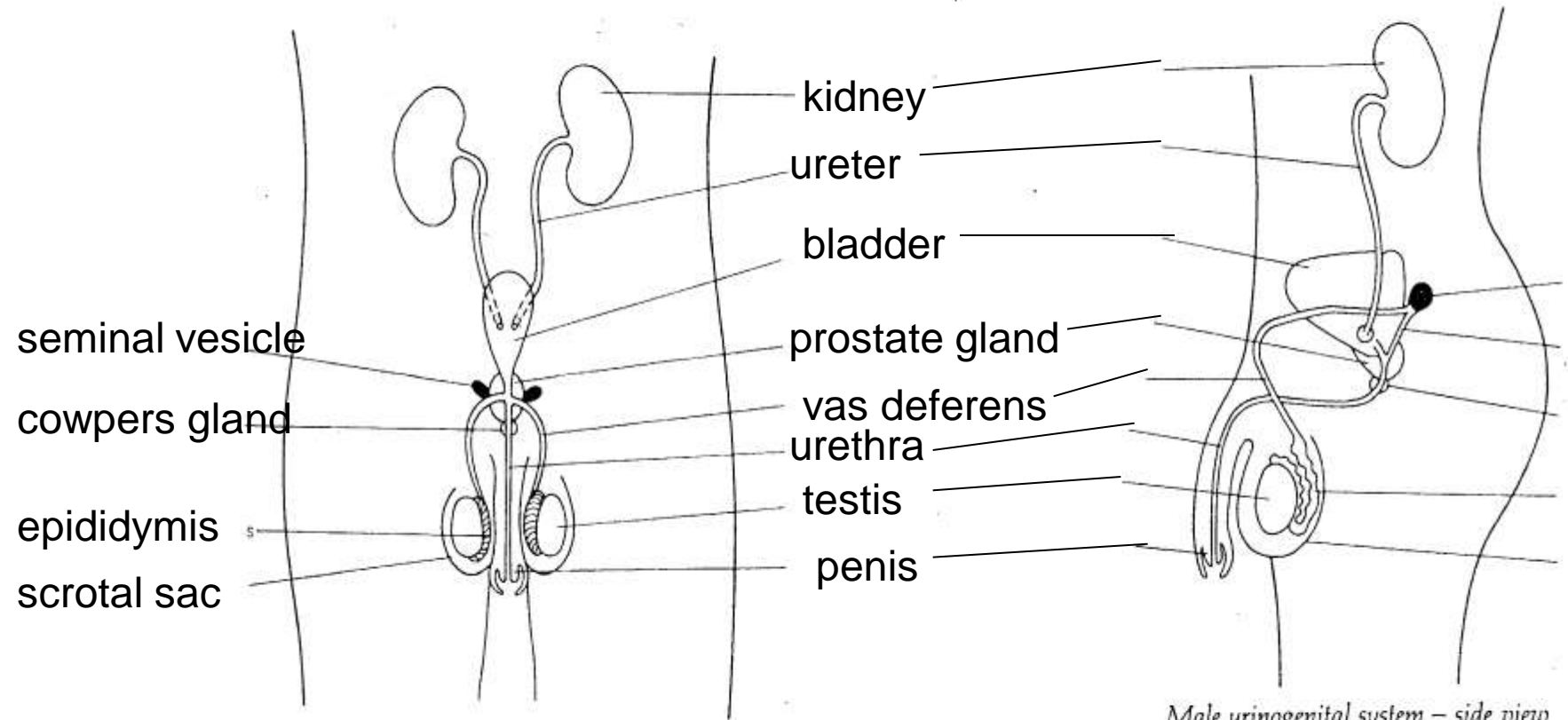


3. 19.3(a) Male urinogenital system (simplified) – front view

Male urinogenital system – side view

Artery

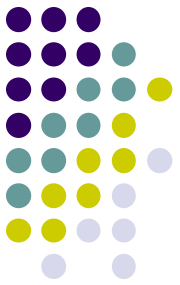
Human male reproductive system



3. 19.3(a) Male urinogenital system (simplified) – front view

Male urinogenital system – side view

Artery



Male sex organs

- The **prostate** (NOT prostrate), cowpers glands and seminal vesicles mix secretions with the sperm to form **semen** (not seaman, or even sailors!)
- Semen provides nutrients for the sperm

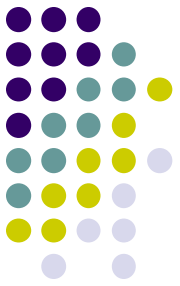
Sperm Formation



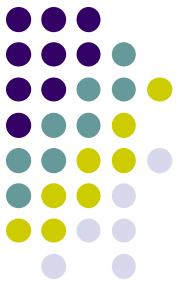
- Form in testes
- Temperature important!
- Scrotum
- Leave testes via epididymus to the vas deferens

Penis

- Organ of copulation
- Deposits the sperm into the vagina

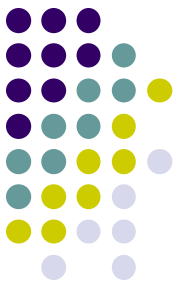


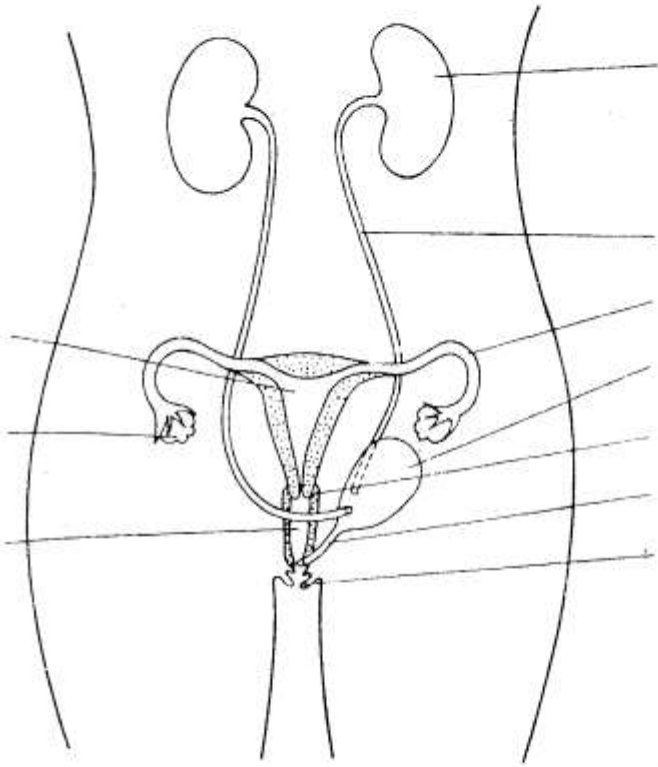
Secondary Sexual Characteristics - Male



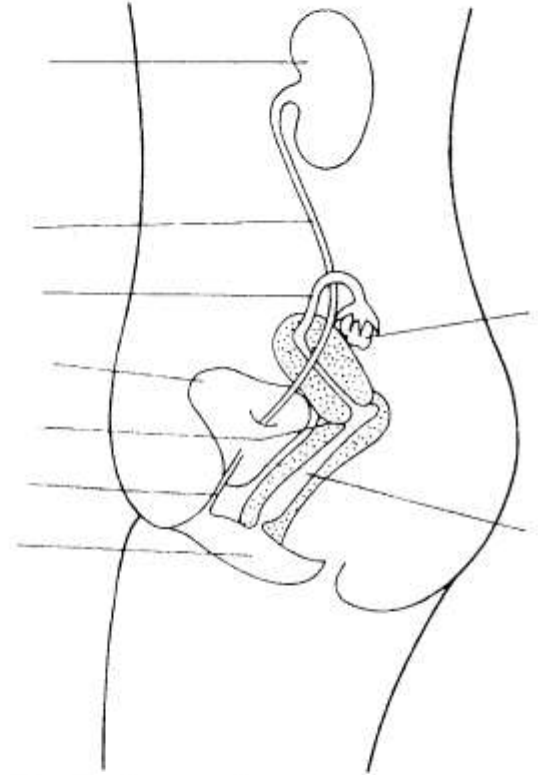
- Produced by **testosterone**
 - Deeper voice
 - Axillary and pubic hair
 - Chest and facial hair
 - Lengthen bones
 - Increased size of testes for sperm production

Female sex organs

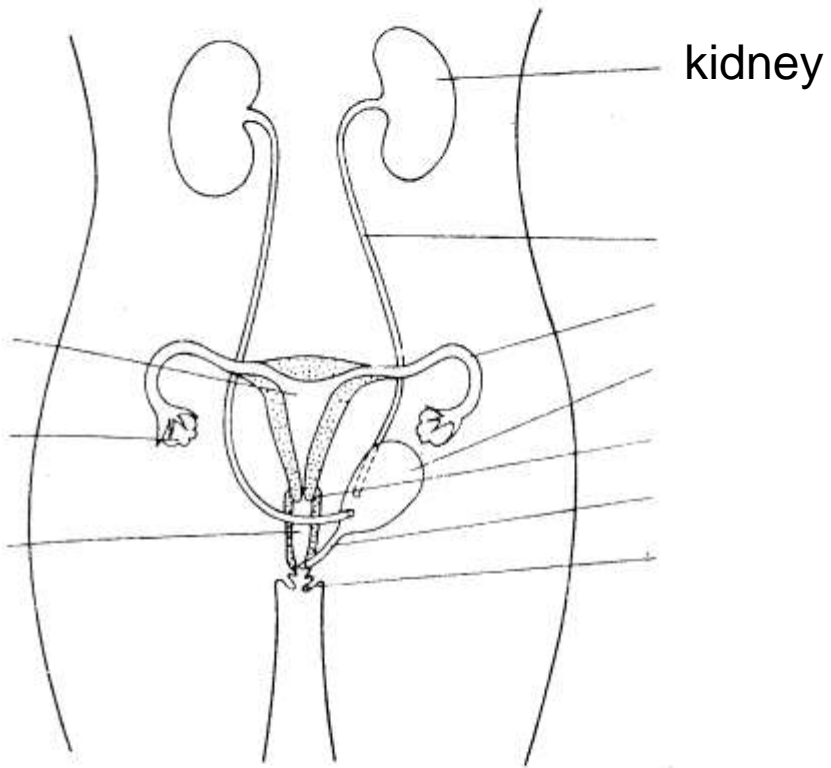




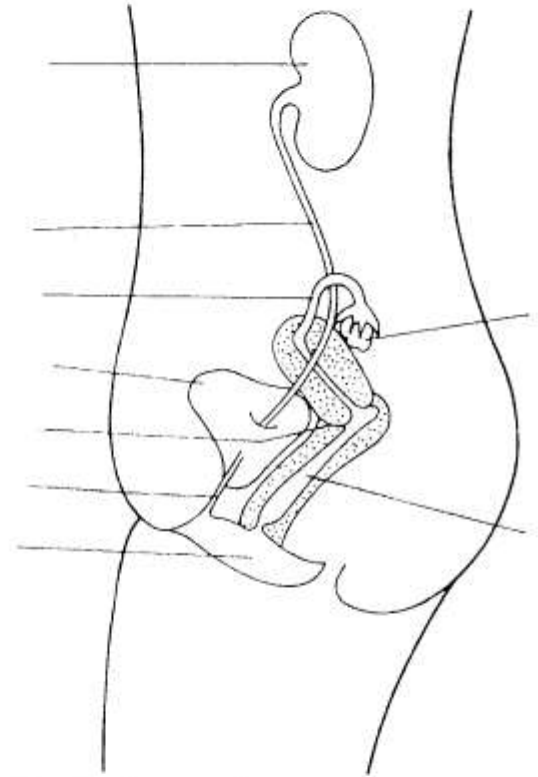
Female urinogenital system – front view



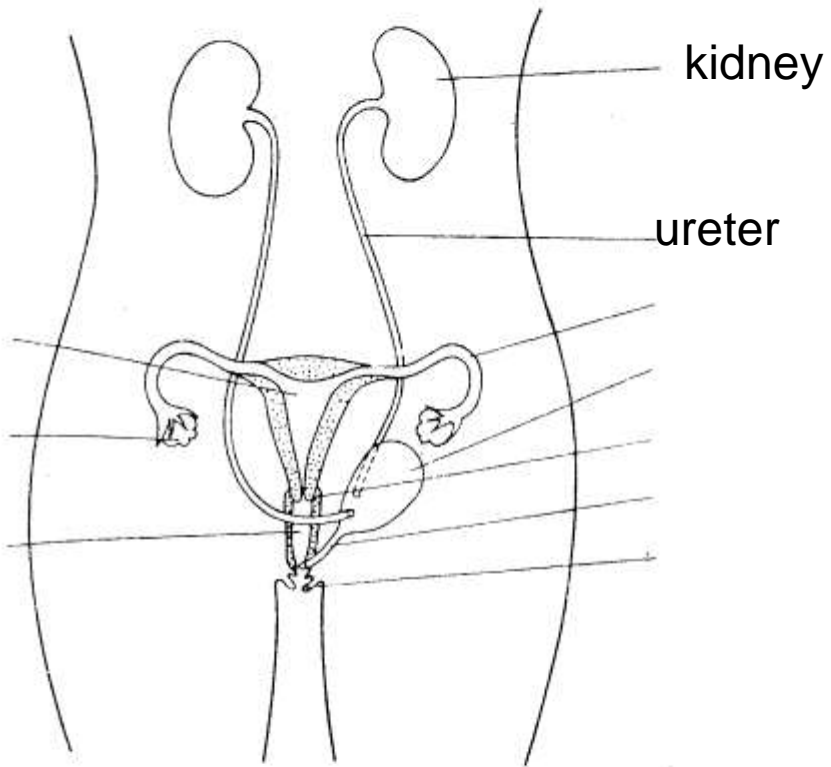
Female urinogenital system – side view



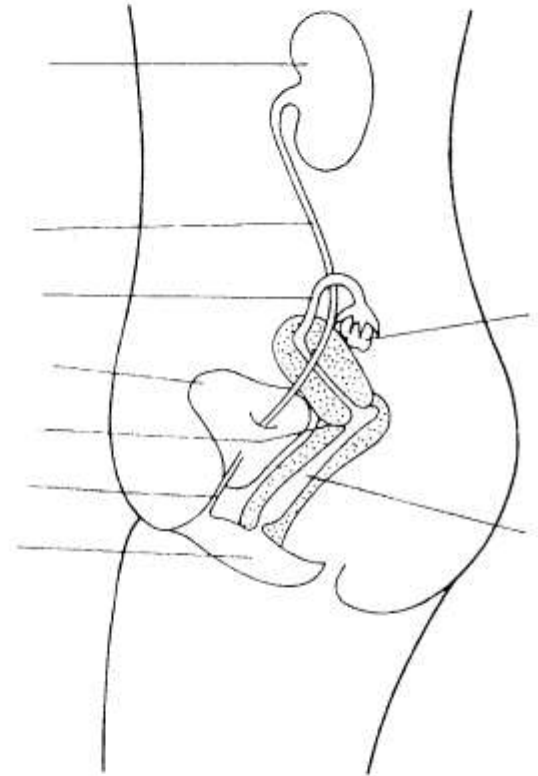
Female urinogenital system – front view



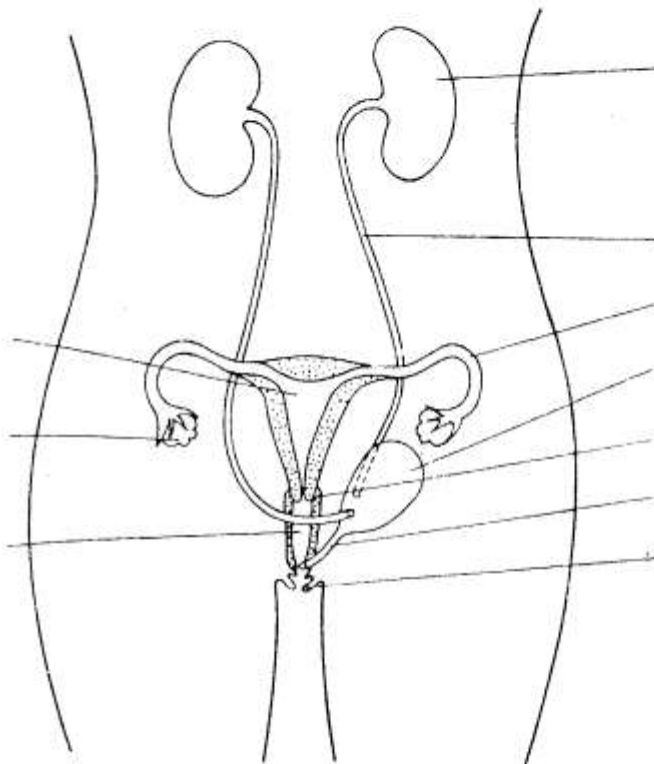
Female urinogenital system – side view



Female urinogenital system – front view



Female urinogenital system – side view

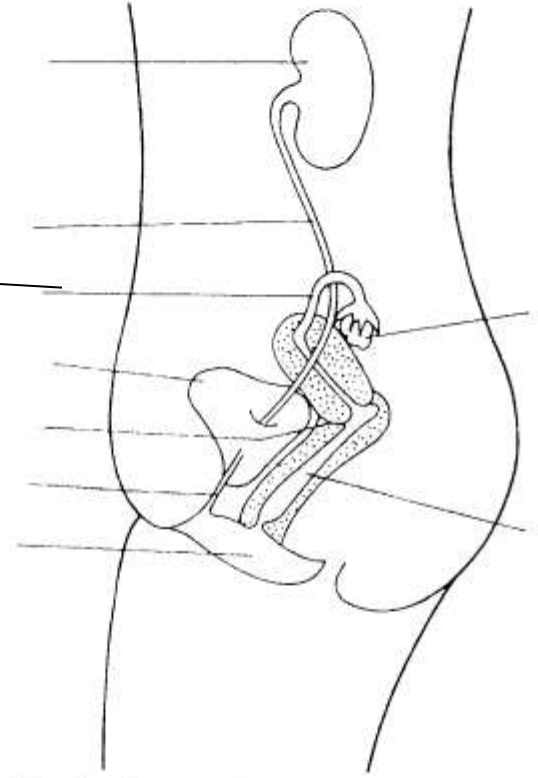


kidney

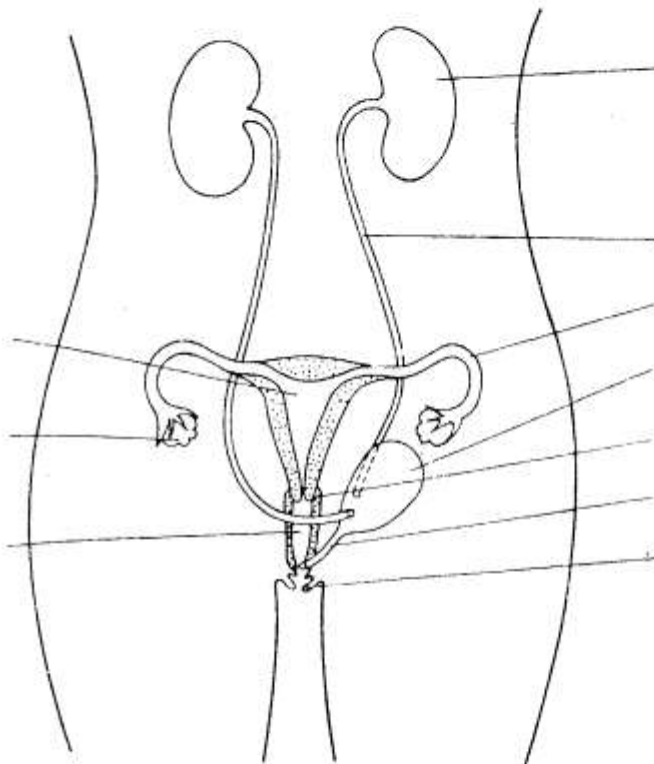
ureter

Fallopian tube

Female urinogenital system – front view



Female urinogenital system – side view



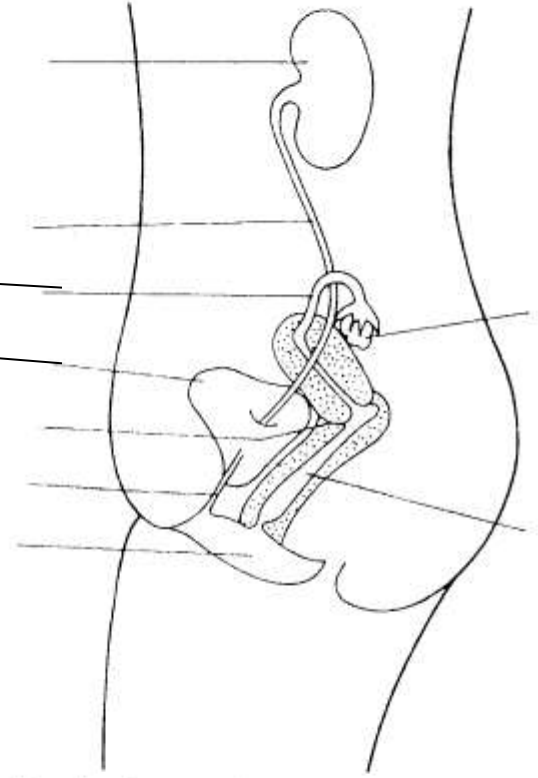
kidney

ureter

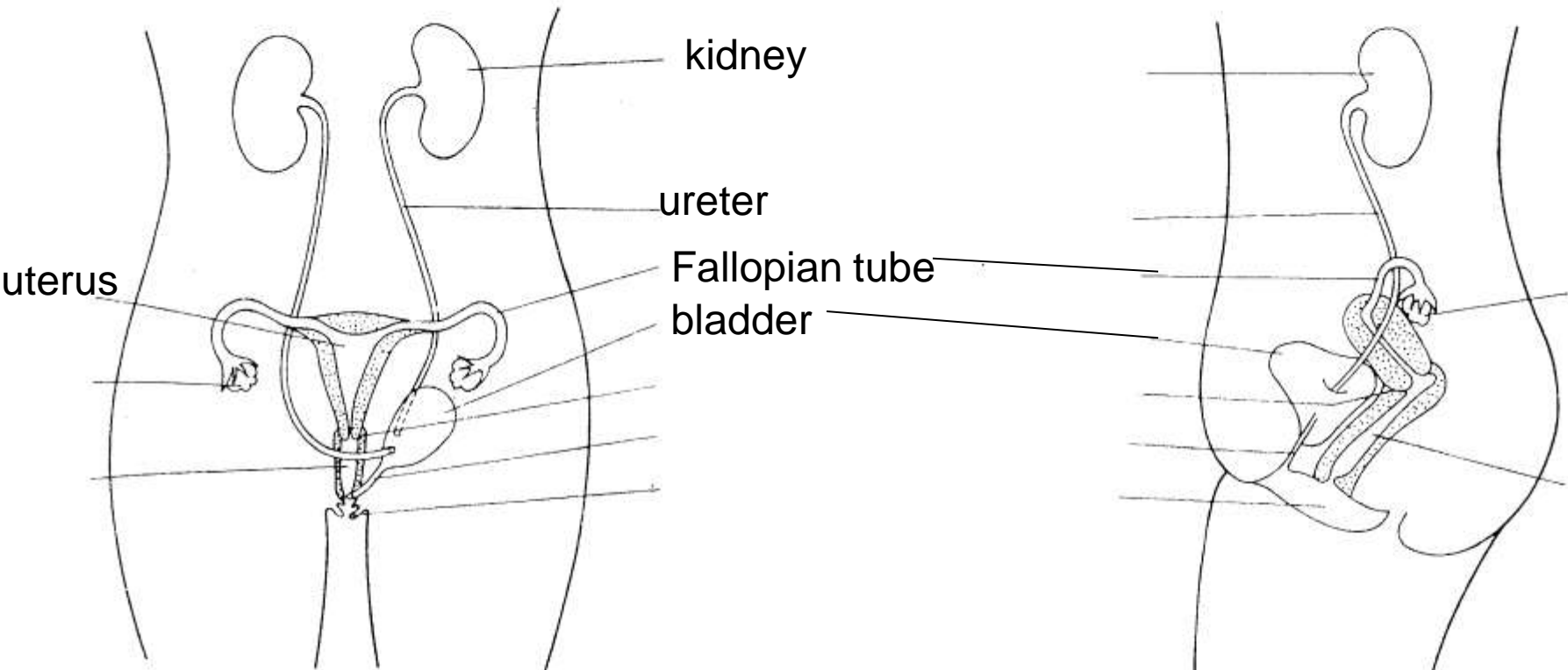
Fallopian tube

bladder

Female urinogenital system – front view

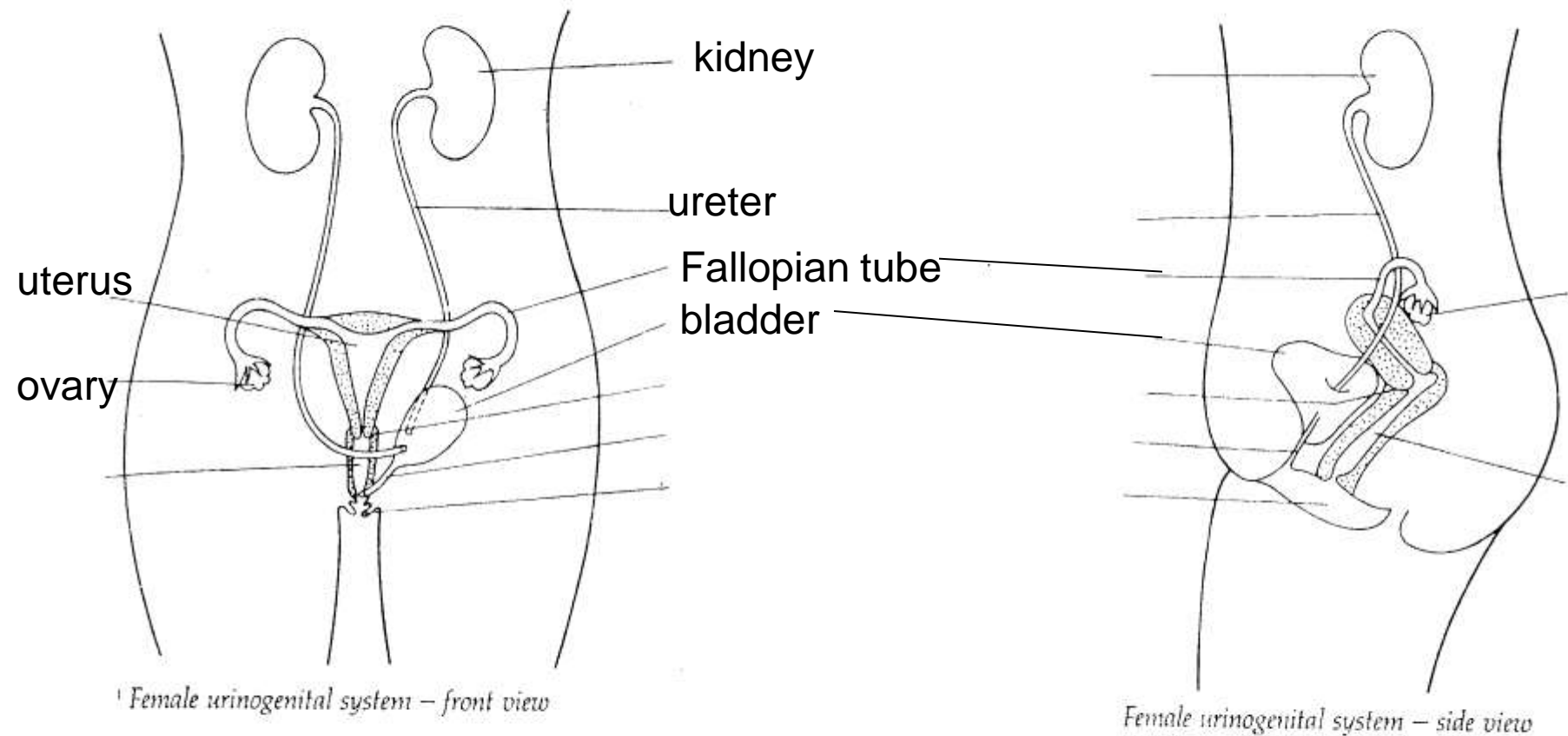


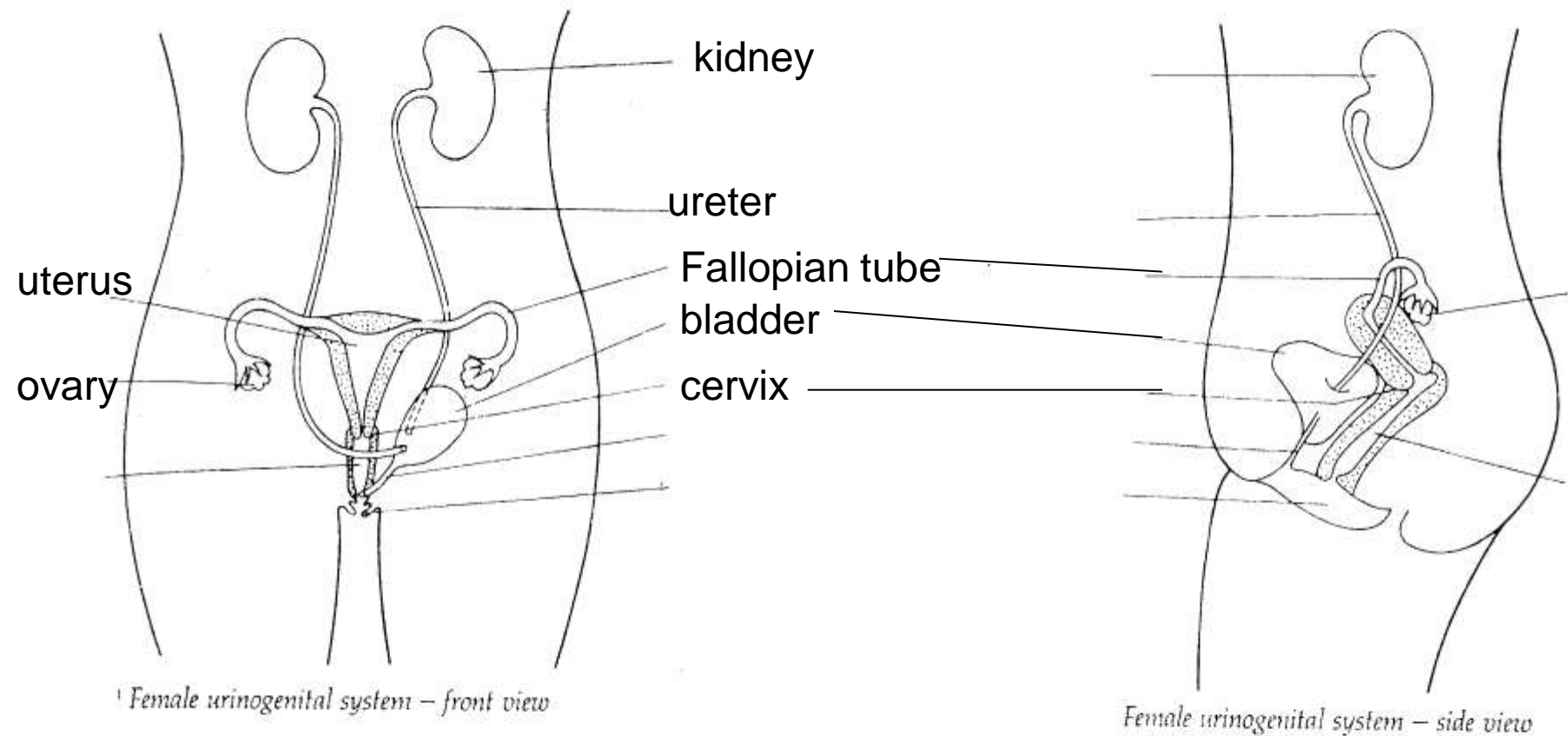
Female urinogenital system – side view

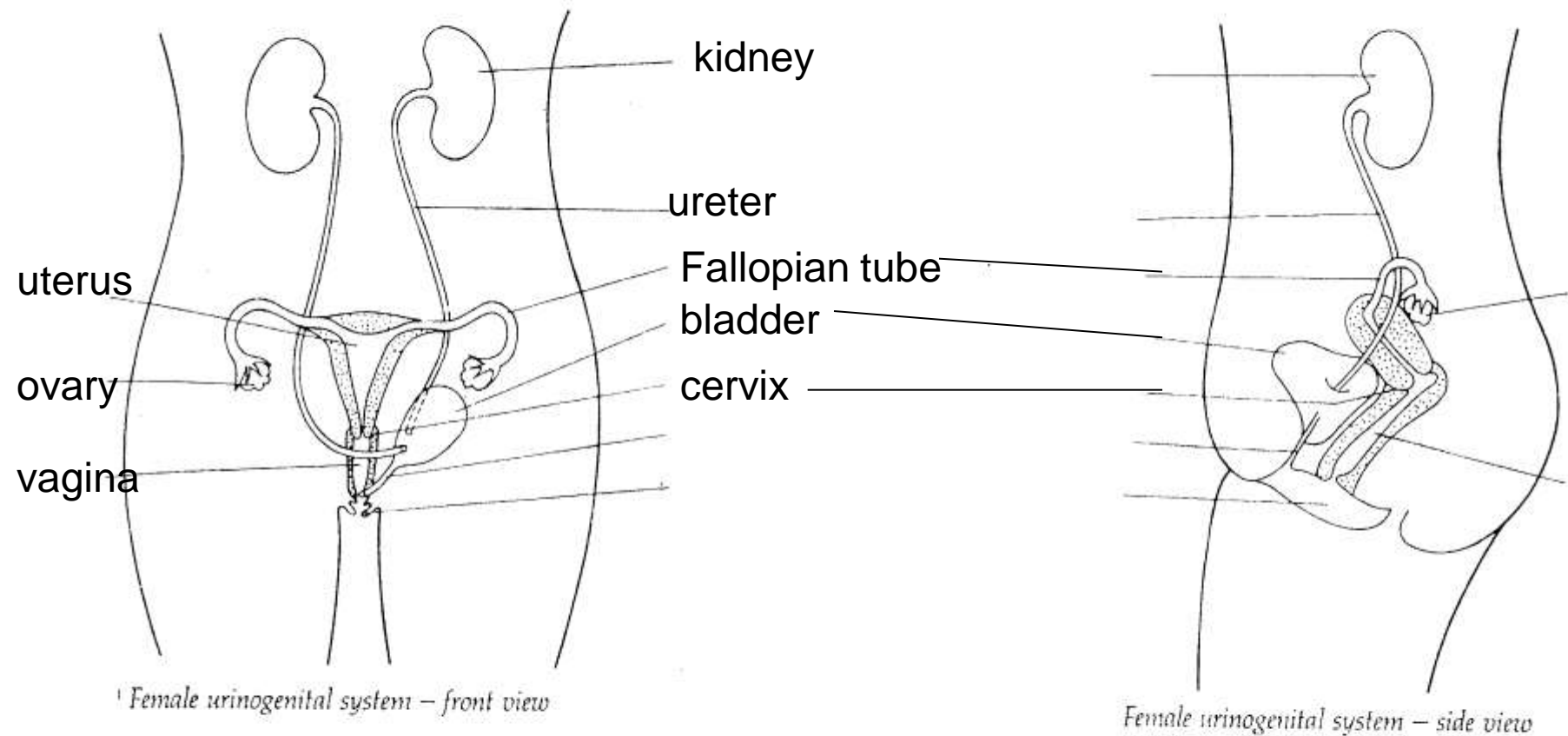


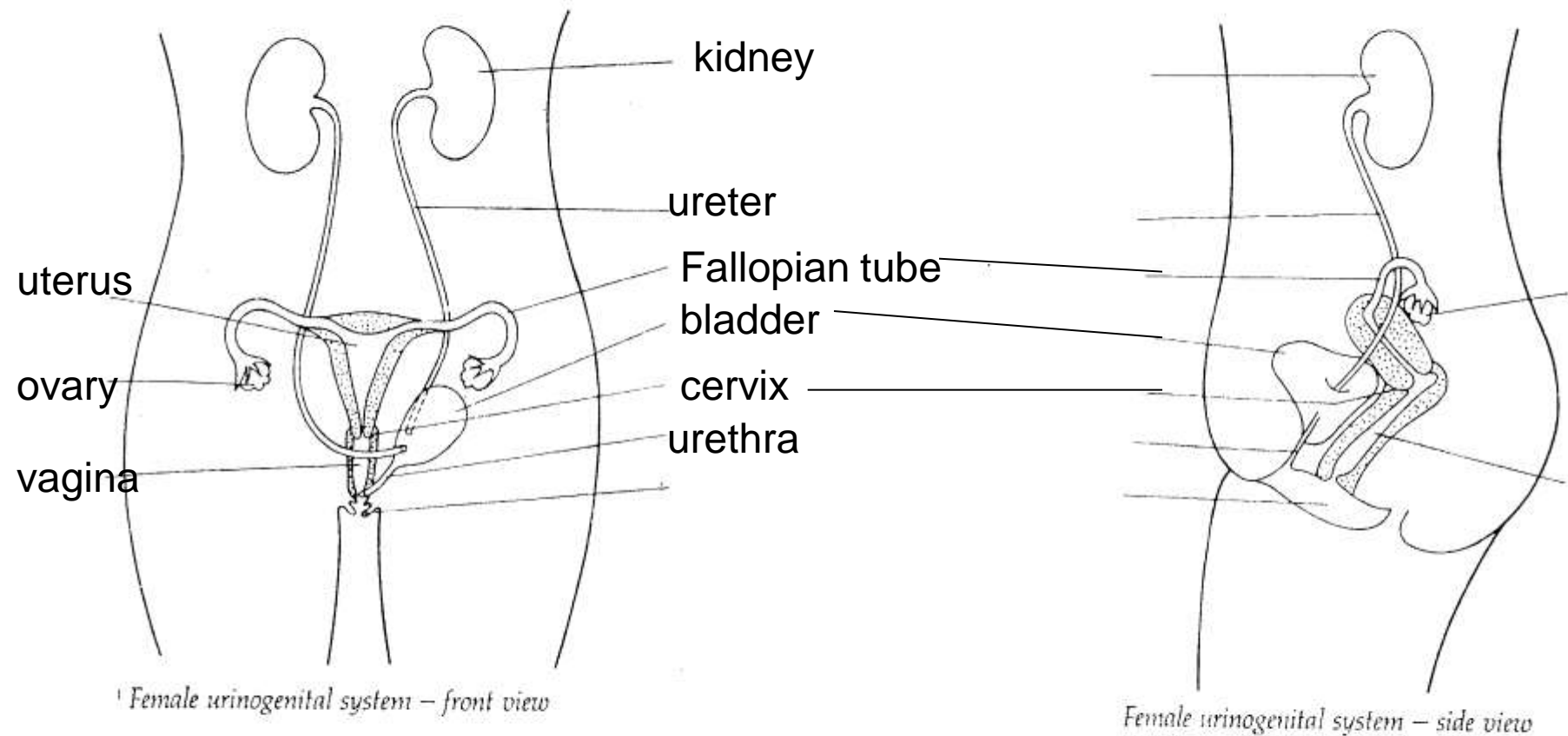
Female urinogenital system – front view

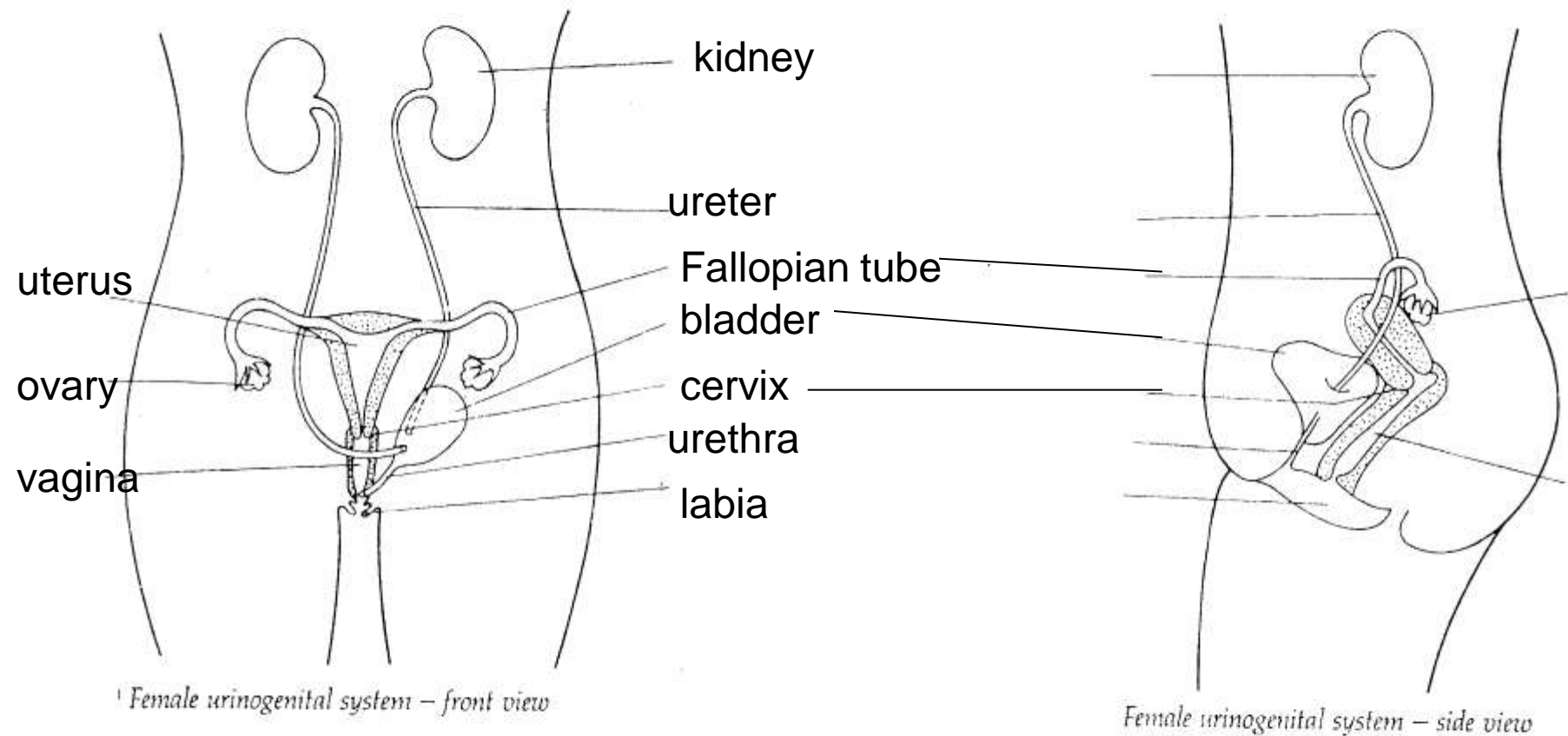
Female urinogenital system – side view

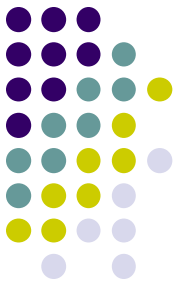








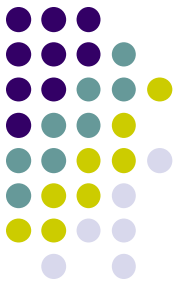




Ovum Formation

- MEIOSIS
- Ova are formed before birth
- 1 ovum per month is matured and released from ovaries

Secondary Sexual Characteristics - Female



- Induced by increased LH, FSH, estrogen, and progesterone hormone levels
 - Axillary and pubic hair
 - Widen pelvis
 - Enlarge mammary tissue
 - Begin menstrual cycles